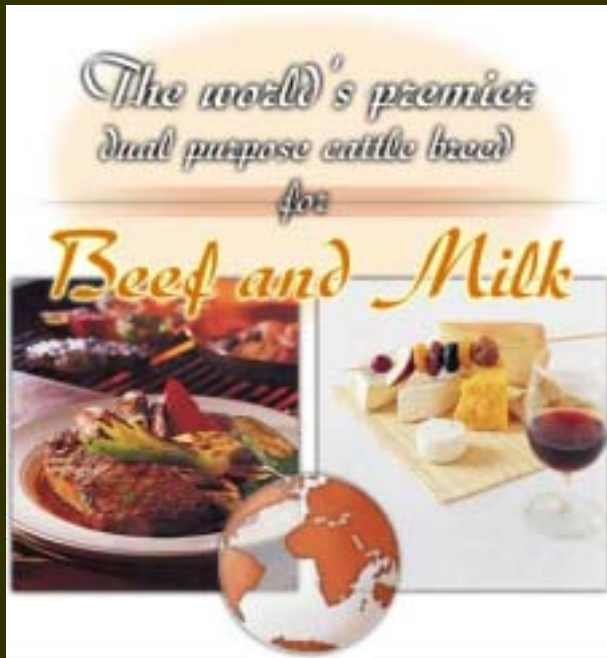




SIMMENTAL/FLECKVIEH AS BEEF BREED



The first time that the world wide state of affairs of the
BEEF SIMMENTAL is documented.

Thanks to all the breed Association's who responded to my request for information



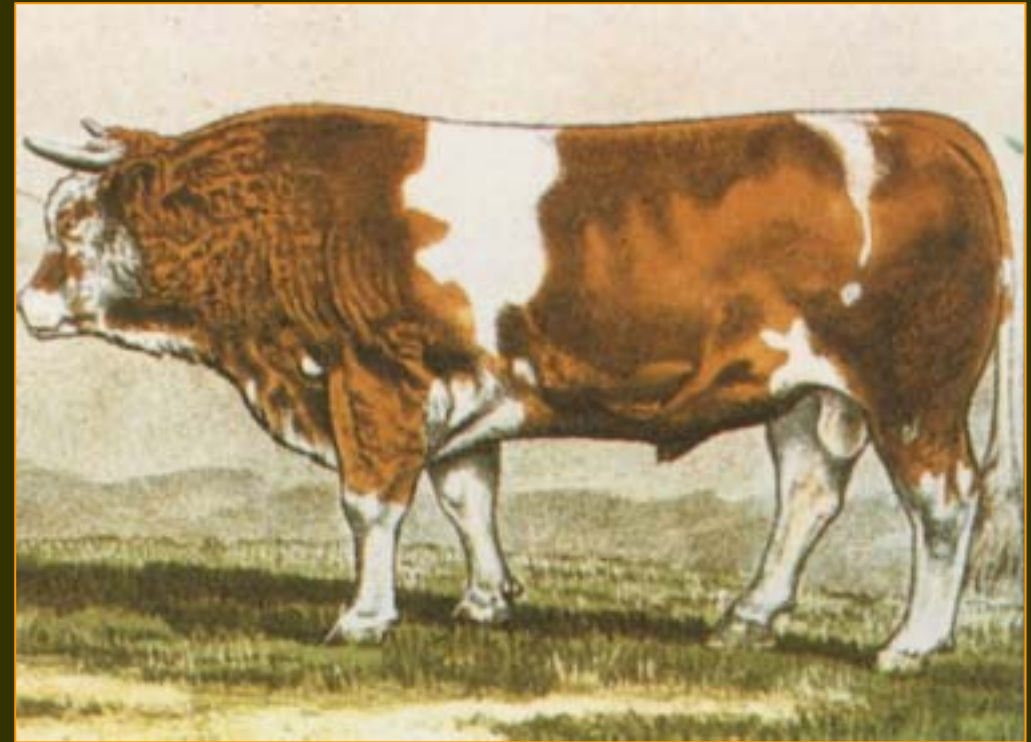
The birth of Simmental-Fleckvieh

Abhandlung der Rassenveränderung der Fleckvieh
von dem Verfasser im Jahre der Bau des 28. Jul. 1790
München 3. Teil.

Die Rassenveränderung folgende Hauptaufgaben:
1) aus dem Rassen Wald die besten Tiere, besonders
die besten Kühe, die besten Bullen
2) aus dem Rassen Wald die besten Kühe, die besten Bullen
3) aus dem Rassen Wald die besten Kühe, die besten Bullen
4) aus dem Rassen Wald die besten Kühe, die besten Bullen

Die Rassenveränderung folgende Hauptaufgaben:
I. Die Rassenveränderung folgende Hauptaufgaben:
1) Die Rassenveränderung folgende Hauptaufgaben:
2) Die Rassenveränderung folgende Hauptaufgaben:
3) Die Rassenveränderung folgende Hauptaufgaben:
4) Die Rassenveränderung folgende Hauptaufgaben:

II. Die Rassenveränderung folgende Hauptaufgaben:
1) Die Rassenveränderung folgende Hauptaufgaben:
2) Die Rassenveränderung folgende Hauptaufgaben:
3) Die Rassenveränderung folgende Hauptaufgaben:
4) Die Rassenveränderung folgende Hauptaufgaben:





Not watches, but Simmental became the number one export product of Switzerland ?





25 000 breeders in 18 Central and Eastern countries





The 26 member countries of the WSFF can be divided in 3 groups

Dual purpose countries ($< 10\%$ suckler)

Austria, Croatia,
Czech Republic,
France, Germany,
Italy, Slovakia,
Slovenia,
Switzerland.

[9]

Beef countries ($< 1\%$ cows milked)

Argentina,
Australia, Brazil,
Canada, Colombia,
Denmark, Ireland,
Mexico, Namibia,
New Zealand,
South Africa,
Sweden, United
Kingdom, Uruguay,
USA.

[15]

Dual and beef countries ($1/4$ suckler $3/4$ dual)

Hungary
Serbia

[2]



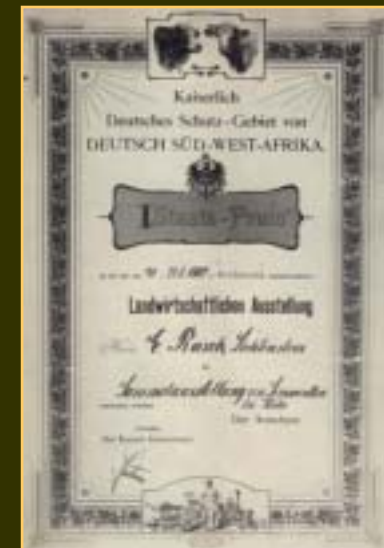
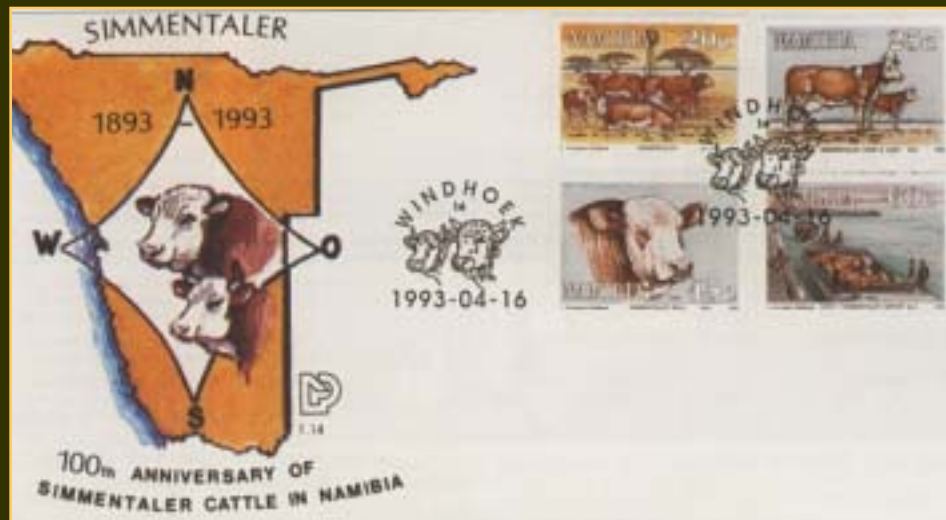
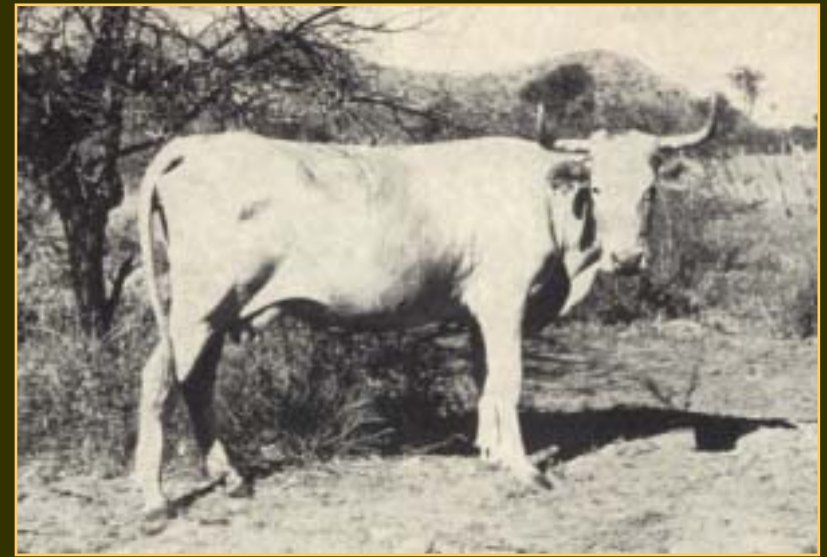
Simmental-Fleckvieh in “beef countries”



The principle objective is the weight of beef sold per cow mated or per unit grazing land.



Namibia ...the birth of the beef Simmental





Namibia today





South Africa was next



A President imported
the 1st Simmental to
South Africa



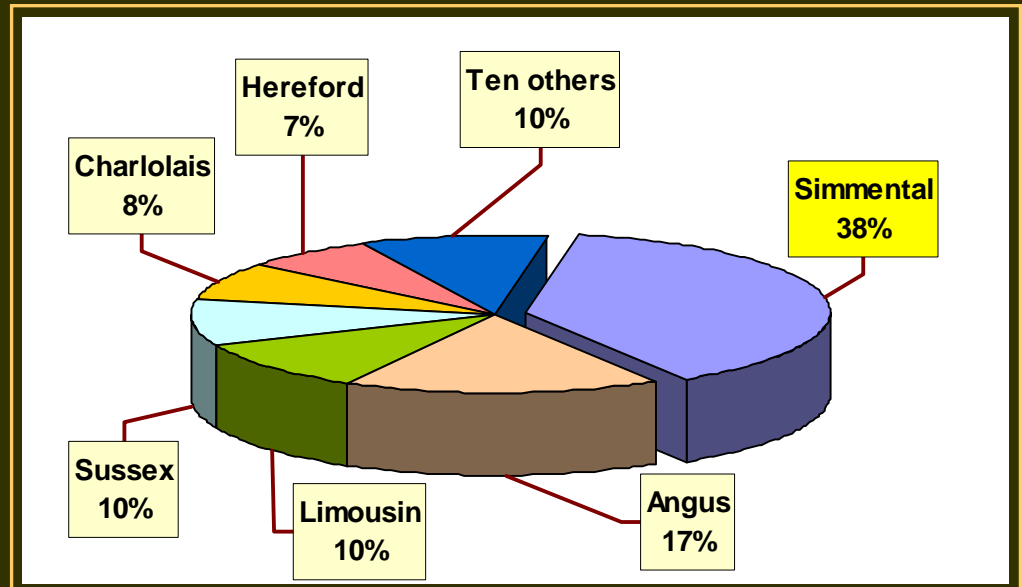
“Toni” the 1st
imported bul



On deck of a ship
from Europe



Today in South Africa





Reasons for popularity in S. Africa + Namibia

1 Can be used effectively as either a sire or dam line in cross breeding programs



2 Functional correctness is a pre-requisite for registration. Every animal is inspected by experts

SIMMENTALER		Registration Certificate (Registrierungsbescheinigung)	
NAME	...	REGISTRATION NUMBER	...
DATE OF BIRTH	...	DATE OF REGISTRATION	...
...



3 They perform* : 1st fertility, 1st weaning weight, 1st yearling weight and 1st feedlot gain.



* = Top 10 tested breeds



Our type



From the start we applied the
“middle-of-the-road”
size policy through our
mandatory inspection system



For some of you maybe too small, but they work
capacity, wedge-shaped with legs that can travel





What about milking ?





This spark ignited beef Simmental in many countries



Omatjenne environment



Country of origin environment



World Federation and 1st congress



Formation of a
world federation
in 1974 in
Yugoslavia



1st World show in 1976 with 500 animals from South Africa,
Namibia, Zimbabwe, Austria, Germany, France + Switzerland



For 1st time

..... showing BEEF Simmentals

..... lectures on BEEF Simmental

..... eating BEEF 2X a day (ox on the spit)



The beef boom !

- 1963 : Brazil
- 1968 : Argentina, Canada + USA
- 1970 : UK + Ireland
- 1971 : Australia, New Zealand + Uruguay
- 1973 : Sweden
- 1975 : Denmark
- 1982 : Mexico



Reasons for the popularity ? Suitability for cross breeding



..... in many countries with traditional British breeds and their crosses.



..... in Africa and parts of South America and Australia with Zebu and Zebu types and

..... in some new European countries in “beef from dairy” production systems.



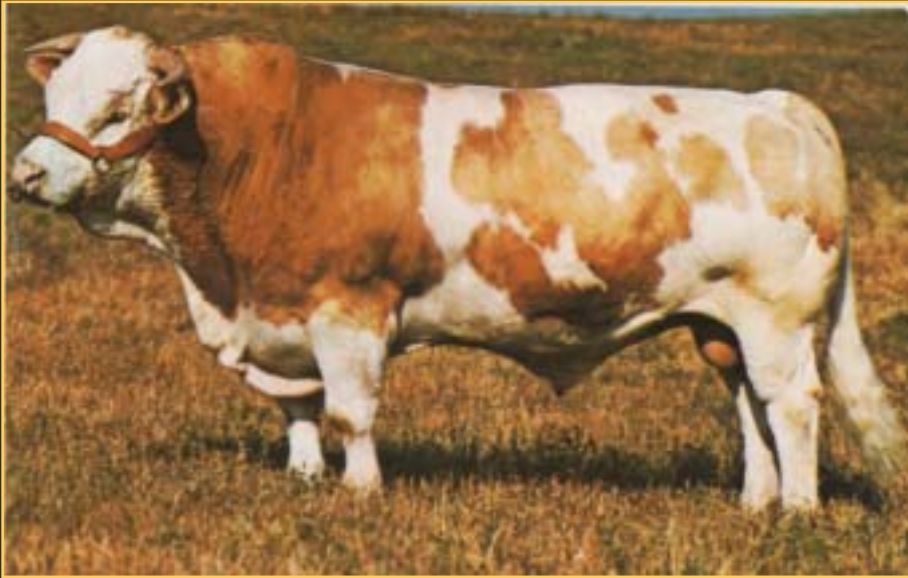


Australia and New Zealand





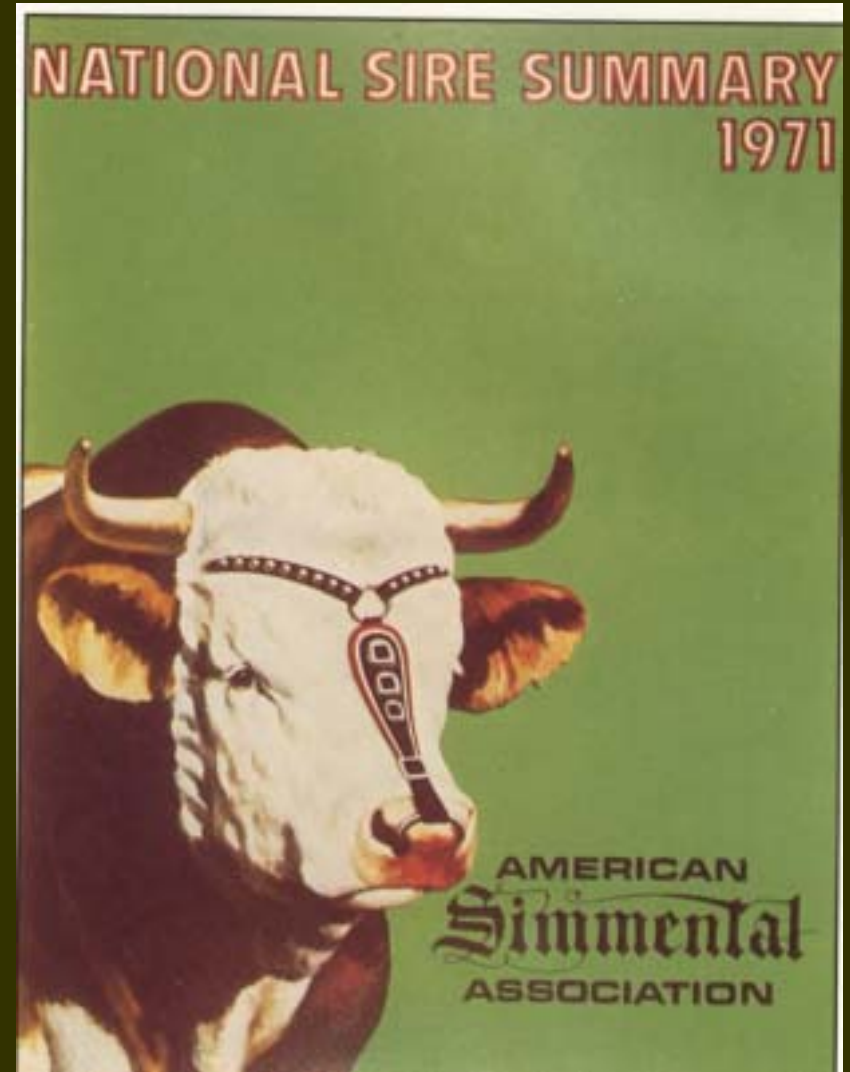
North America



Simmental were developed by upgrading from domestic breeds

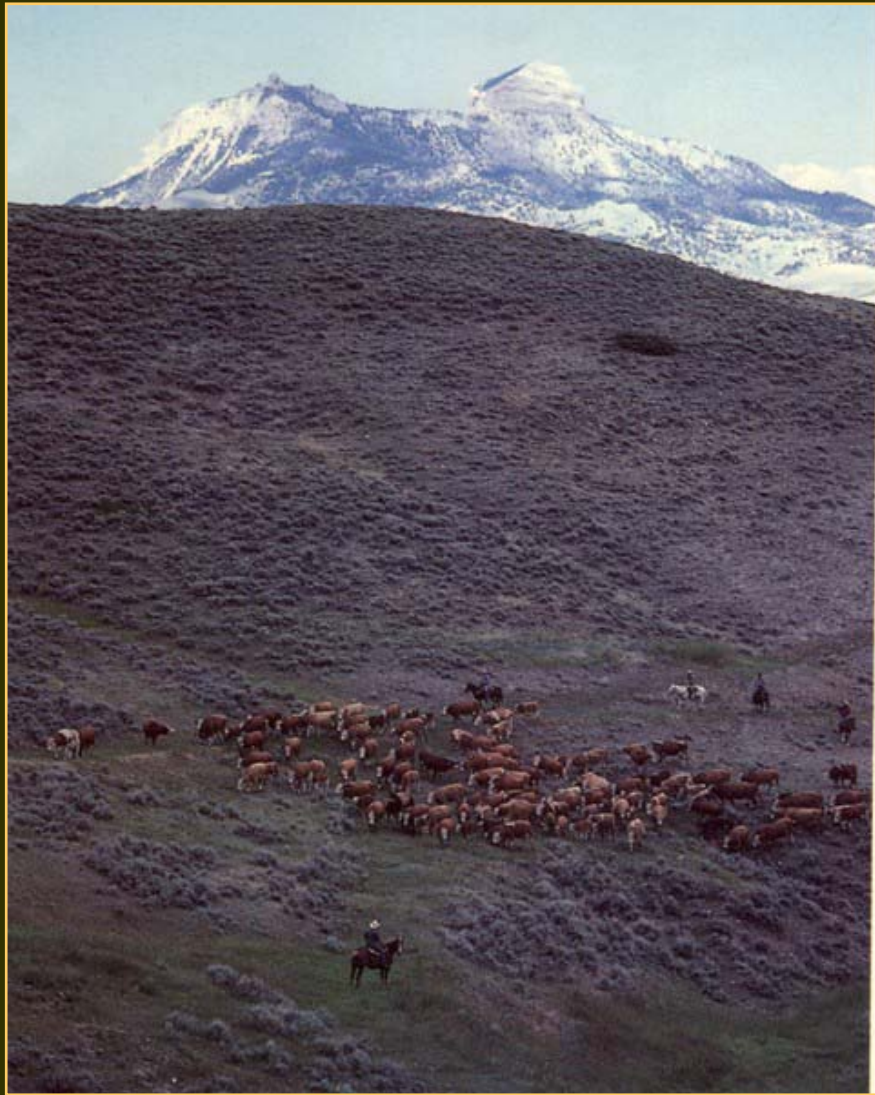


A couple of 1st for the USA





North America today



<p>KJLI The Rock 1L</p>	<p>SSS-SCF Chuckwagon 008J</p>	<p>NLC Good A Nuff 33G</p>
<p>LFE Bring It Black 811K</p>	<p>PVF-CW Rapid Fire 0195K</p>	<p>TCF/RCC Temptation GJ640</p>



South America





Europe



Twyford Corona

Royal Show
(Supreme & Female Champion)



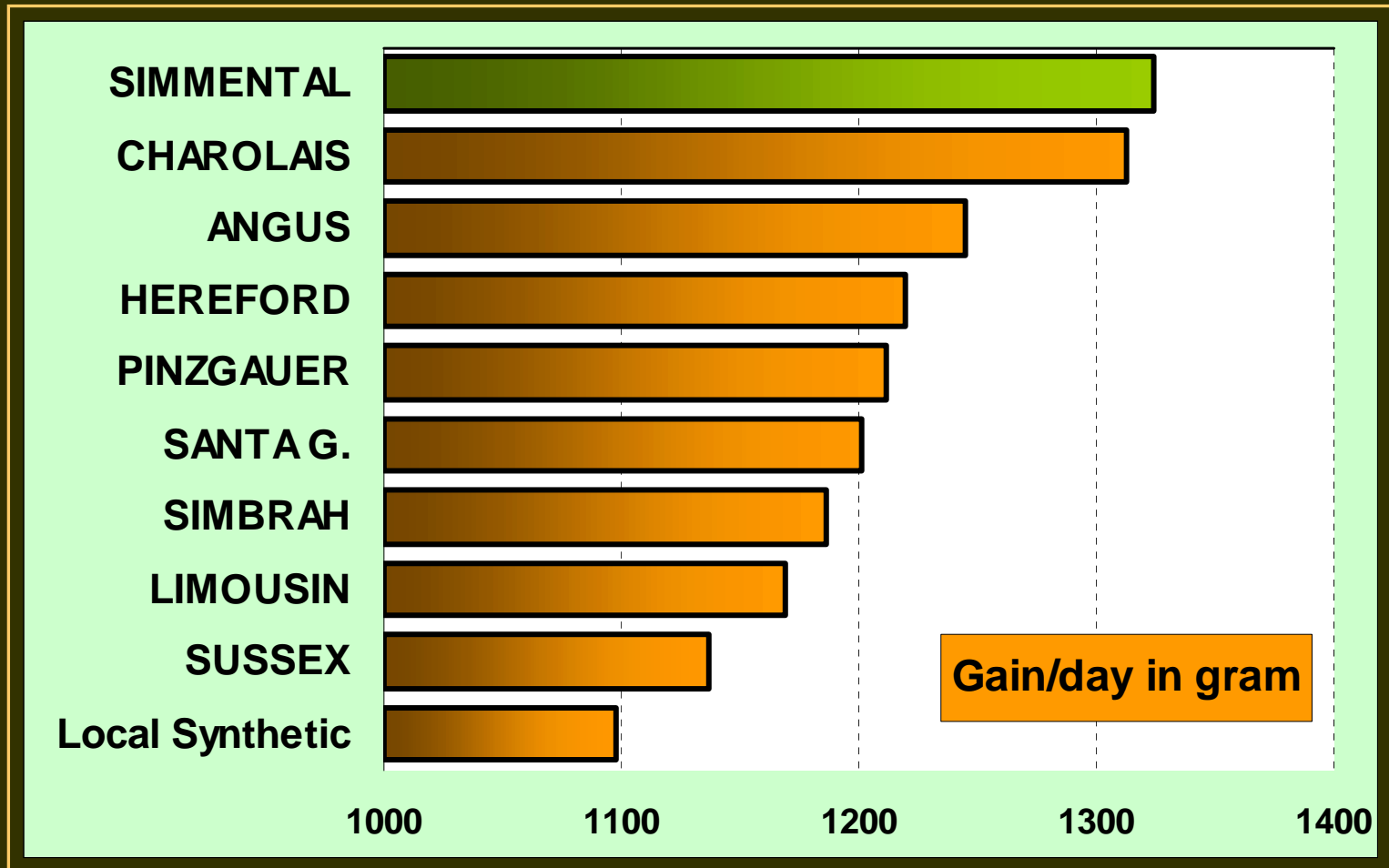


A few interbreed test results



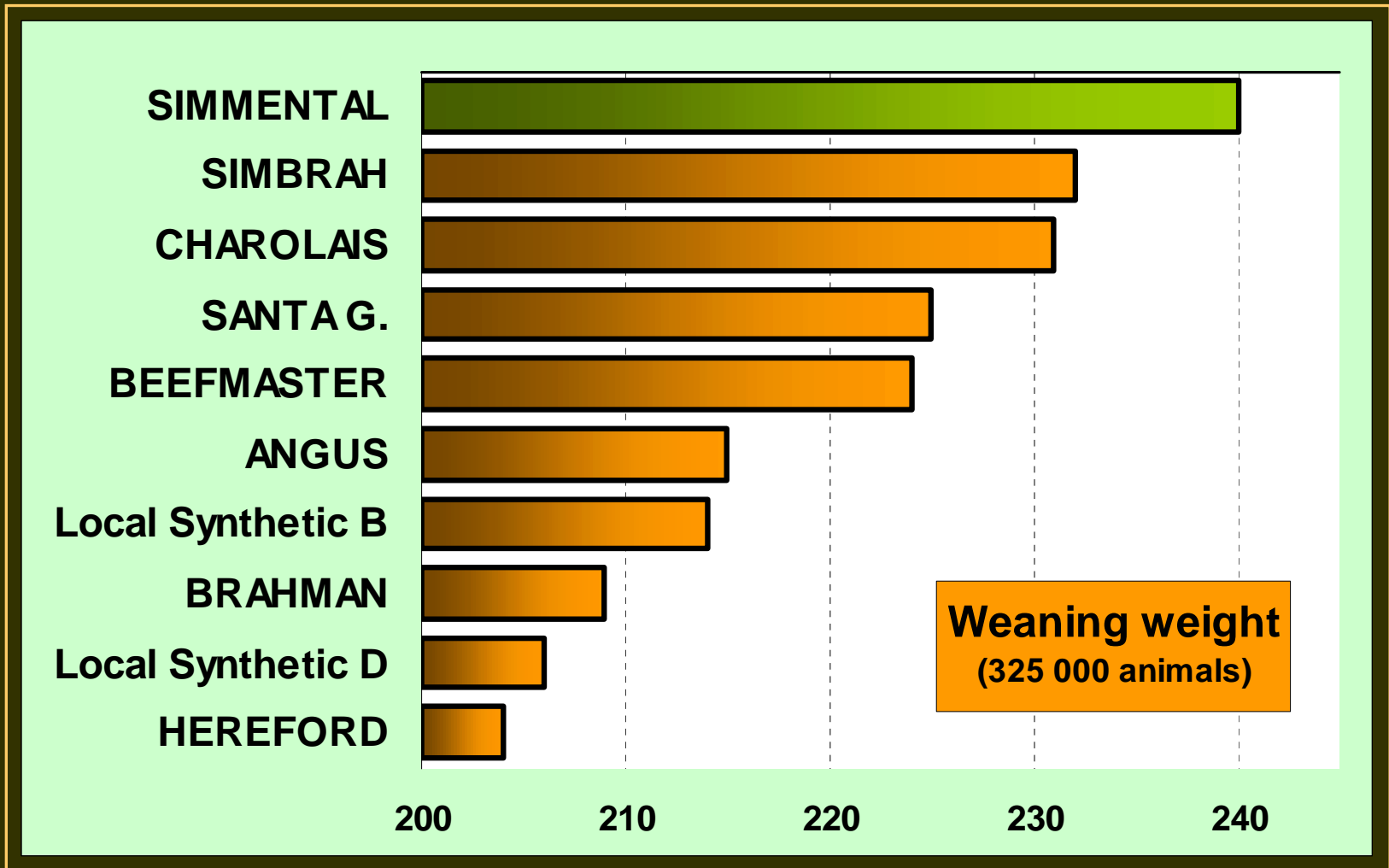
Growth/day/age from birth to 12 mths at central bull testing stations :

Top 10 breeds South Africa





Weaning weight top 10 breeds South Africa with more than 5000 records





Ranking among continental breeds

United States Meat Animal Research Center	Simmental Among Continental Breeds
Economic Traits	Ranking
Calving Ease	First (tie)
Weaning Weight	First
% Choice	First
Carcass Weight	First
Post Wean Gain	First
Pounds of Retail Product	Second
Shear Force	First (tie)
Feed Efficiency by Weight Gain	First
Feed Efficiency by Marbling	First
Feed Efficiency by Retail Product	First
Feed Efficiency by Days	Second
% Puberty	First
% Pregnancy	Second
Maternal Calving Ease	First
Maternal Wean Weight	Second



Canada :The advantage of the Simmental cross cow

Presented here in pounds of calf produced per cow per year (fertility, milk, growth, survival) compared to a Hereford cow base equaling 0

Simmental X Angus produced 25.4 lb more than a Angus X Hereford (35.4 – 10.0) and 35.4 lb more than Hereford (35.4 – 0)

<u>COW BREED</u>	<u>DIFFERENCE (lbs./yr)</u>
Simmental X Charolais	36.5
Simmental X Angus	35.4
Simmental X Limousin	31.3
Simmental	29.2
Simmental X Hereford	25.5
Charolais X Angus	24.6
Charolais	20.2
Limousin X Charolais	19.5
Charolais X Hereford	17.5
Limousin X Angus	15.5
Limousin	12.7
Angus	10.2
Angus X Hereford	10.0

Beef performance testing





Calving ease
direct, birth
weight +
gestation length



Calving ease
daughters

Maternal or
milk



400, 600 and final weights



Weaning
weight

Carcass
traits



Reproduction –
days to calving

Scrotal size
or fertility





The highest EBV is normally not the best.
When a Simmental BEEF bull is selected on grounds of
EBVs it is important to obtain a
BALANCE between the different characteristics
or you will pick up problems like here





Myriad of information available for ALL animals

AMERICAN SIMMENTAL ASSOCIATION

Herdbook Services



**Australia
Namibia
New Zealand
South Africa
UK**



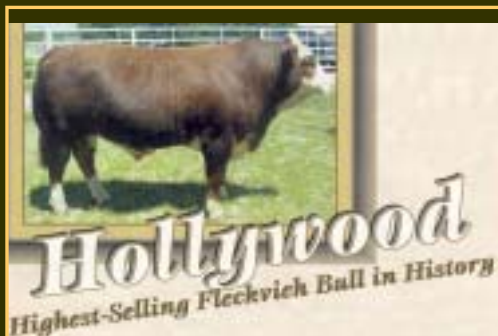
“PENDELUM GENETICS”



Small framed
dumpy cattle
from the
40s + 50s



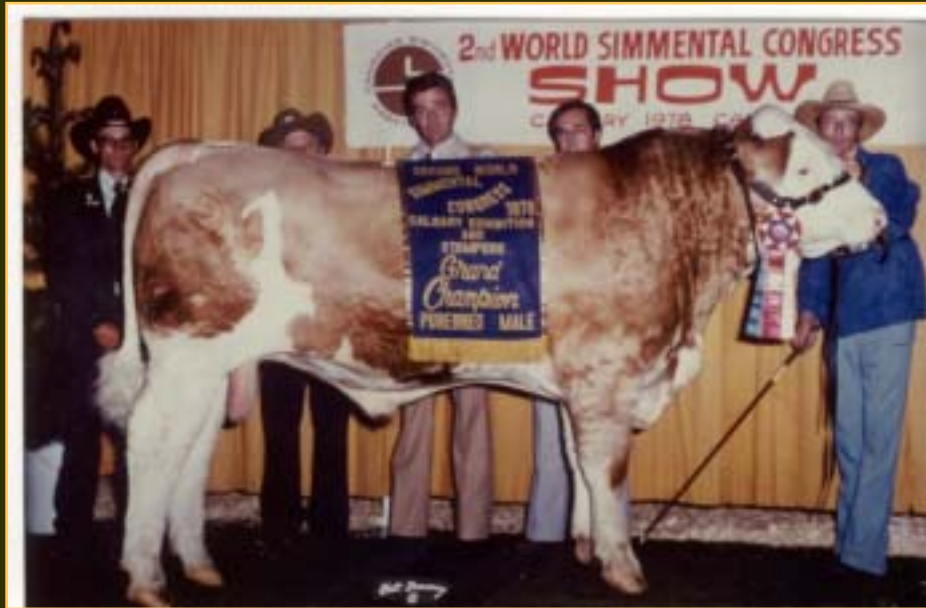
Large-framed, narrow and undep “greyhounds” from the 70’s and 80s



2006



World congress in Canada



1978



2006



The show ring can cause a lot of harm to a breed





Why is
“bigger never the best”
under extensive beef
production systems ?



- Heavier calves leading to calving difficulties.
- Poor constitution resulting in lower fertility.
- Higher maintenance cost.
- Taller animals lay down too little fat.
- Heifers reach sexual maturity later.
- Longer gestation periods limit quick rebreeding and result in larger calves (calving difficulty)



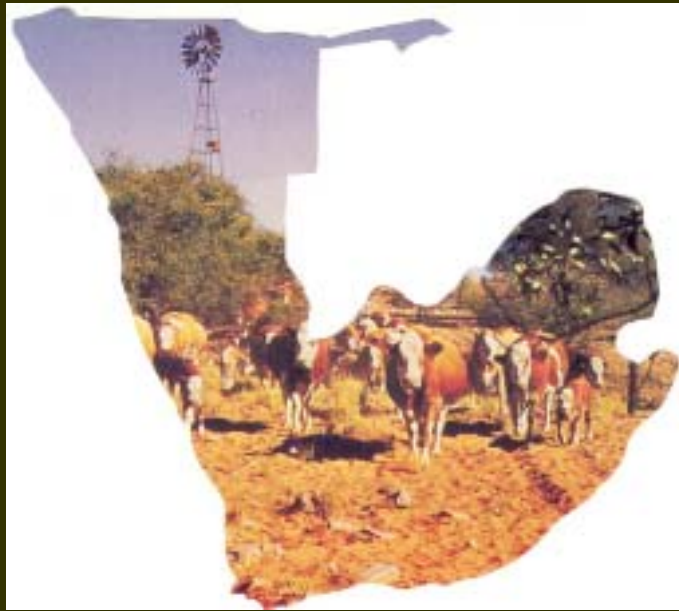
How large should a BEEF cow be ?





Breed identity





Visual assessment is
is not history It is
still very important to
us in Africa !





...and only then the rest of the body

The "tools"

The legs + hooves

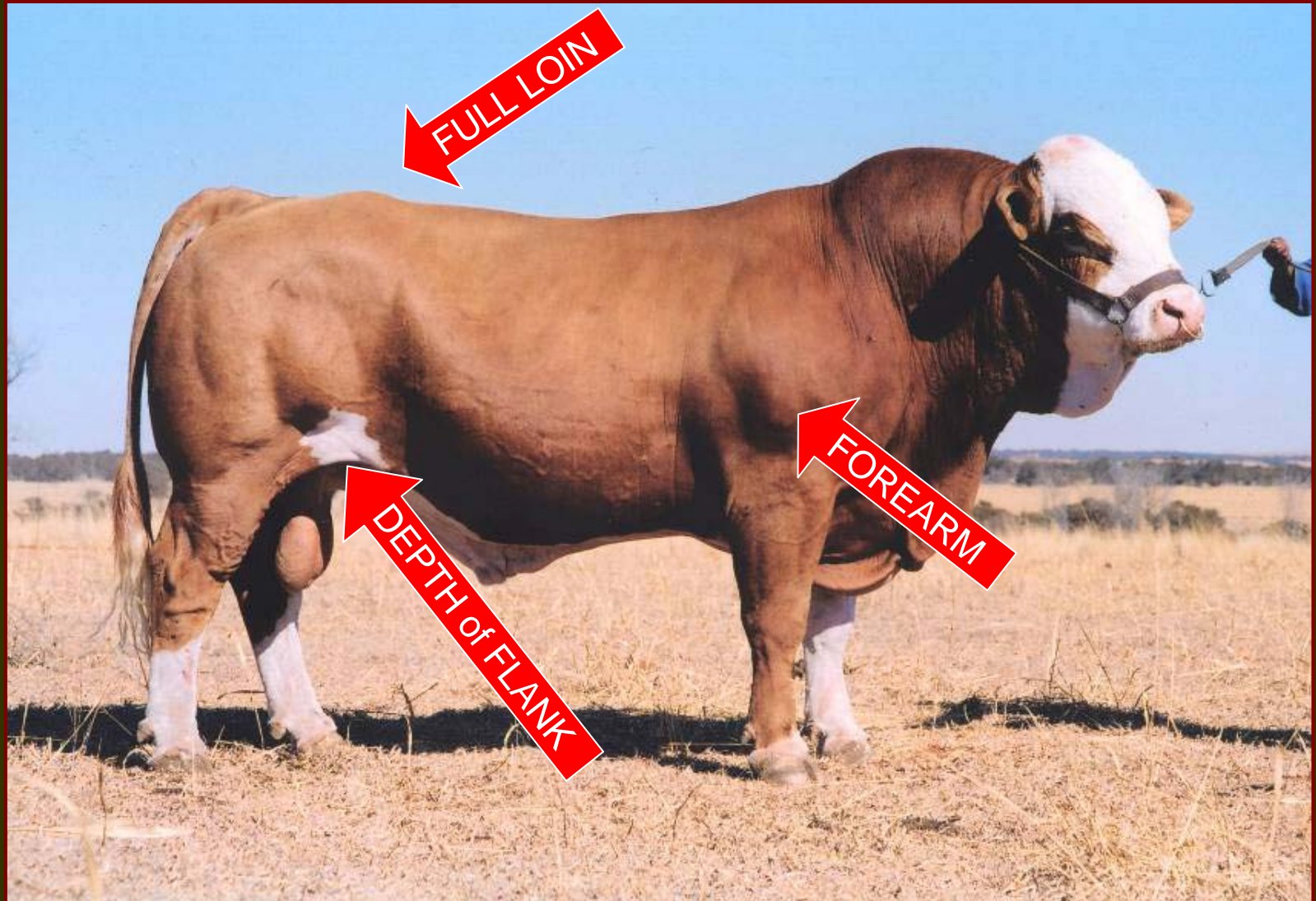


Pay special attention to



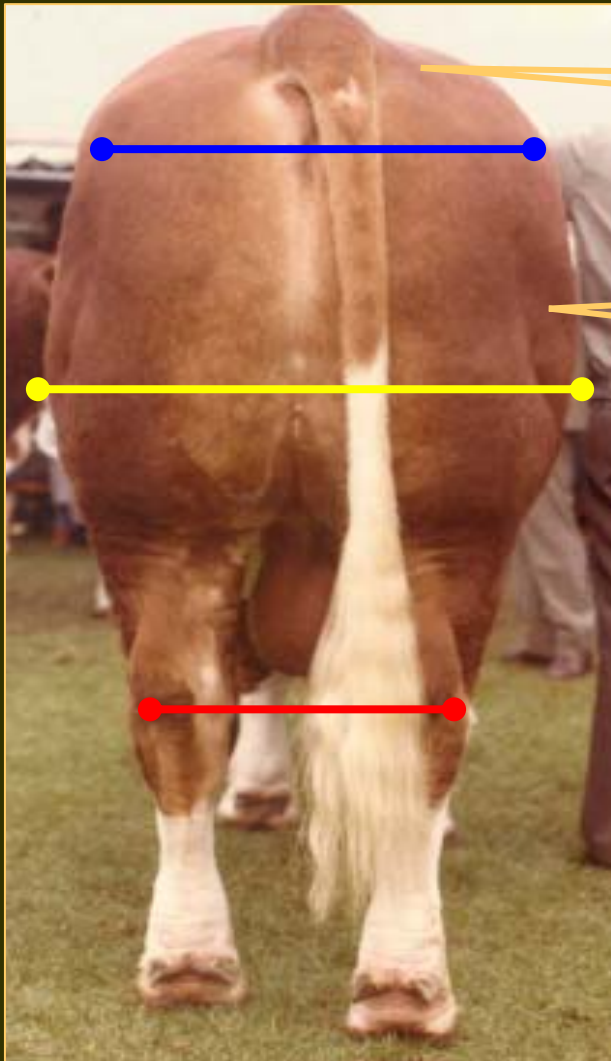


Simmental beef producers don't sell milk...
..... they sell muscle





When viewed from behind the well muscled bull



.... has no fat deposit next to the tail head.

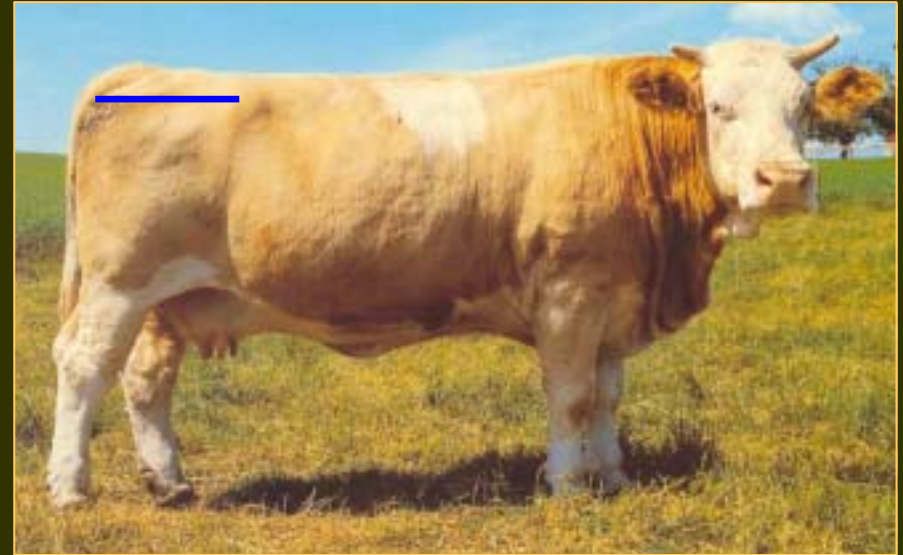
..... must show clearly defined seams or grooves between the muscles

..... is wider through the stifle region (yellow line) than the hips (blue line)
..... the fat, less muscled bull is widest between the hips.

..... has a wide stance (red line) and you cannot see the stomach



Rump, sloping or flat?



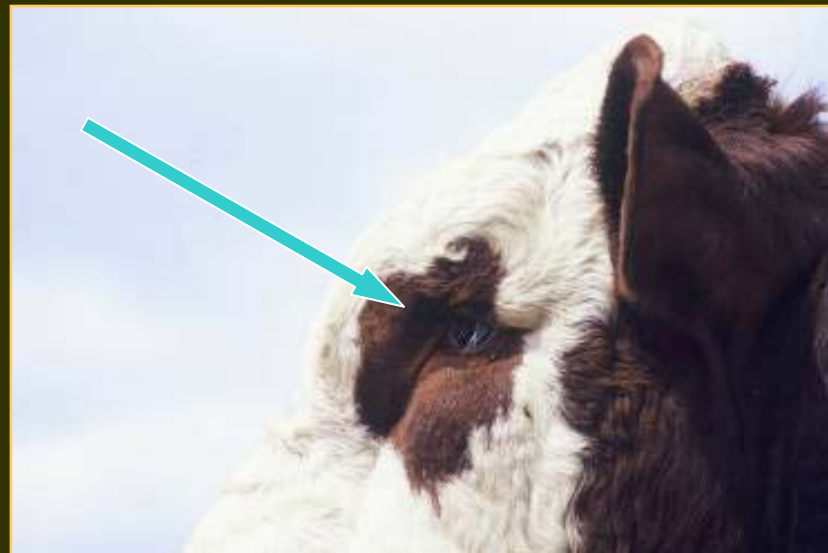
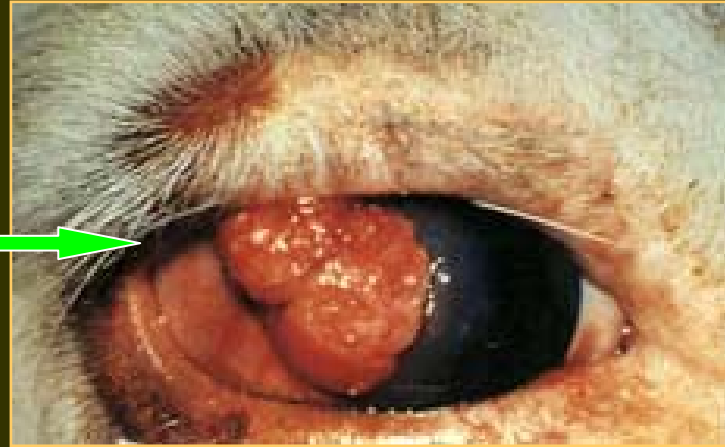


Simmental with different clothes



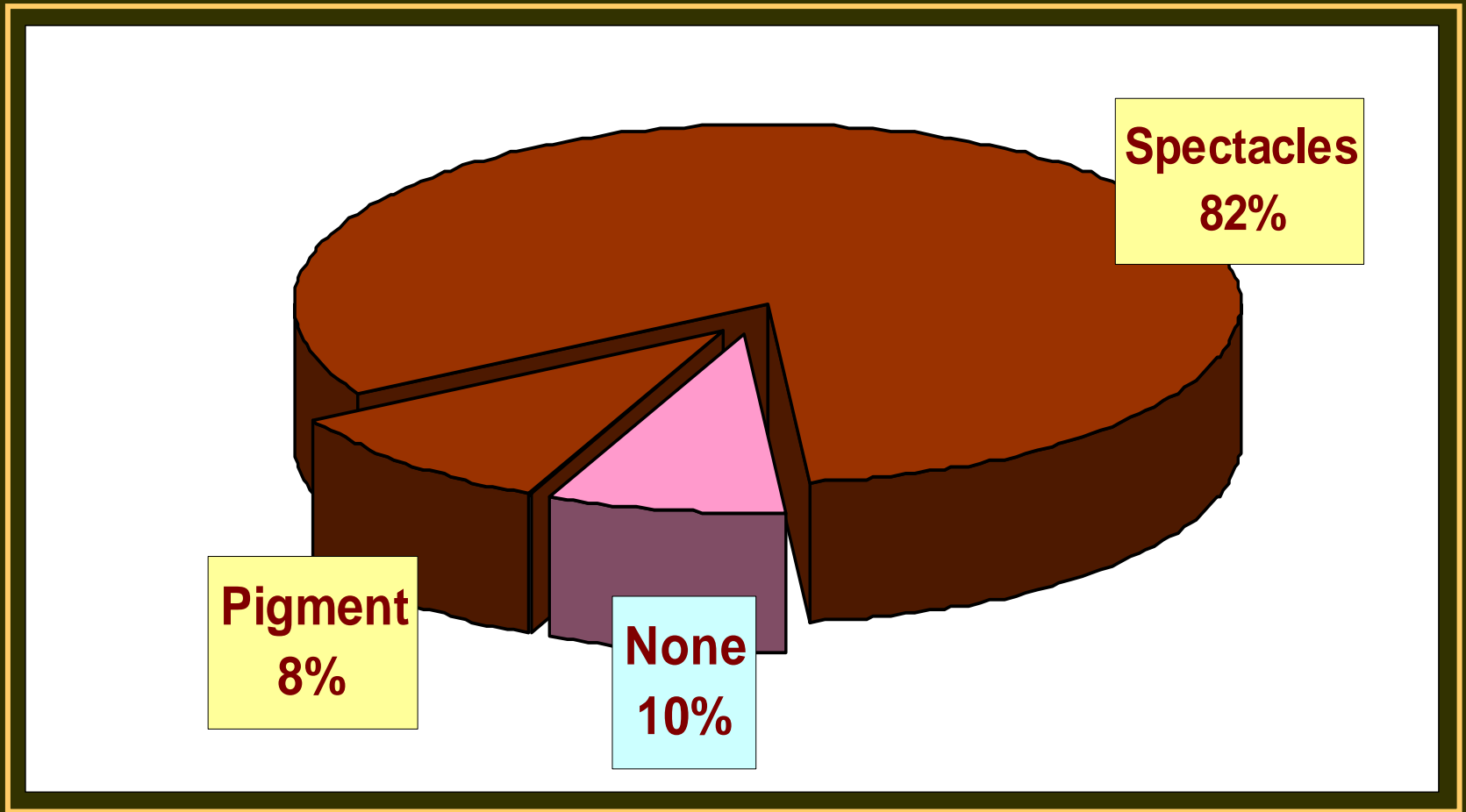


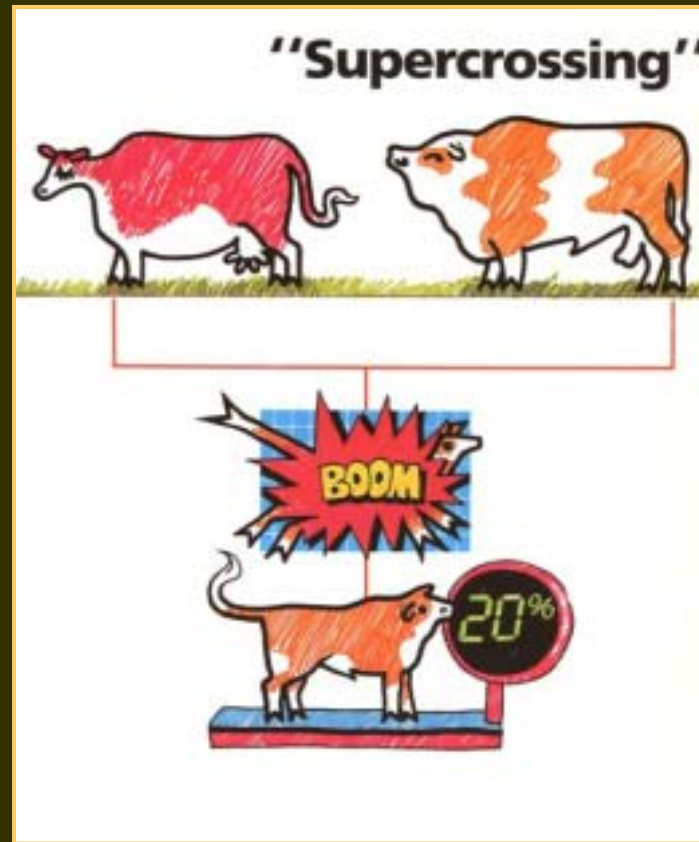
Is eye shadow more than cosmetic ?





Incidence of pigmented eyelids in our active population





The main reason for using Simmental as beef breed is its suitability for CROSS BREEDING which forms the basis of beef production in many countries



1

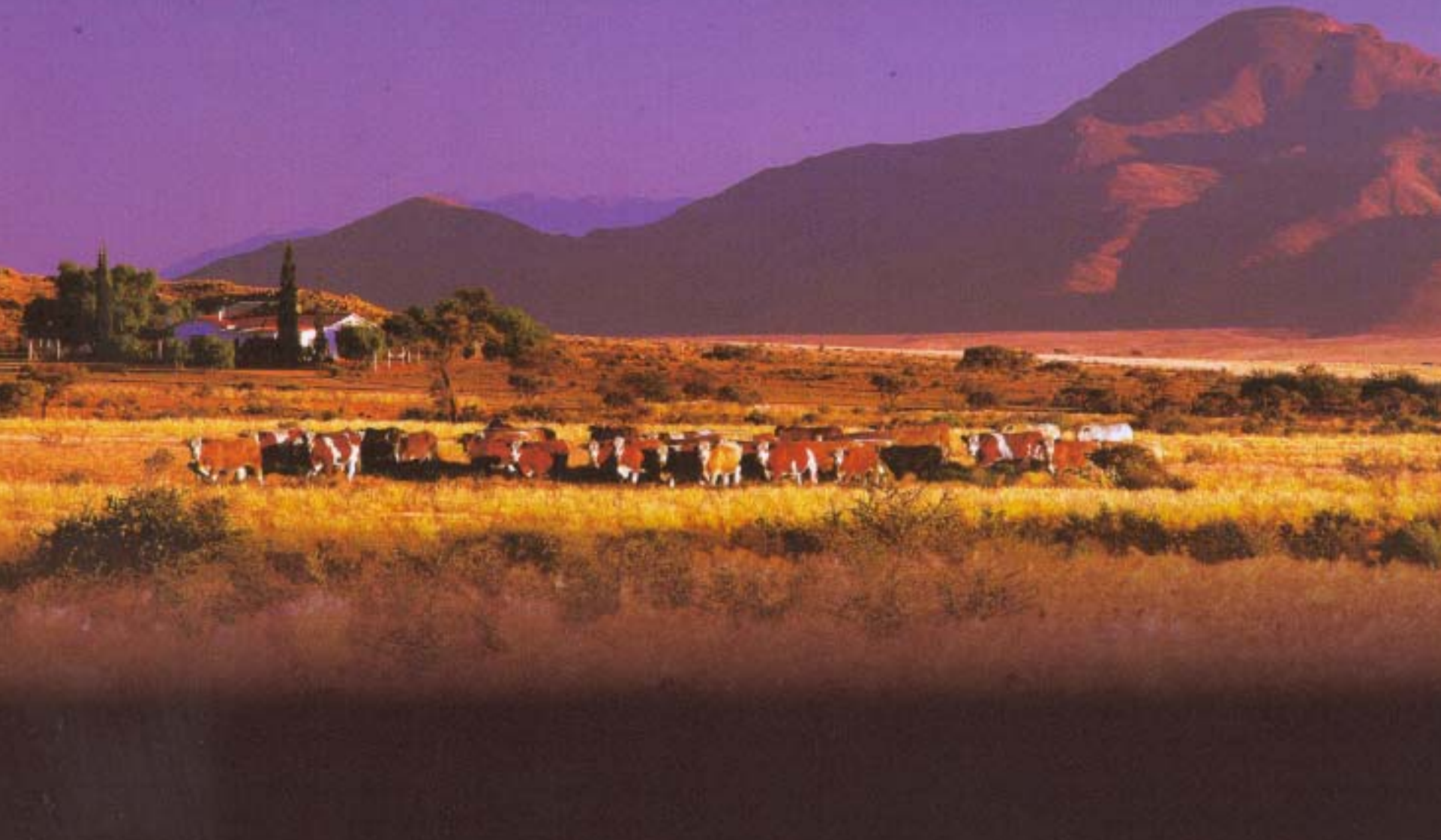


2



3





Thank you for your time