

# Update on the American Simmental Association's Involvement in the Advancement of Genomic Technology



AMERICAN  
**Simmental**  
ASSOCIATION

**406-587-4531**

e-mail: [simmental@simmgene.com](mailto:simmental@simmgene.com)

website: [www.simmental.org](http://www.simmental.org)

Fred Schuetze  
Buzzard Hollow Ranch  
Granbury, Texas USA

# ASA Goal

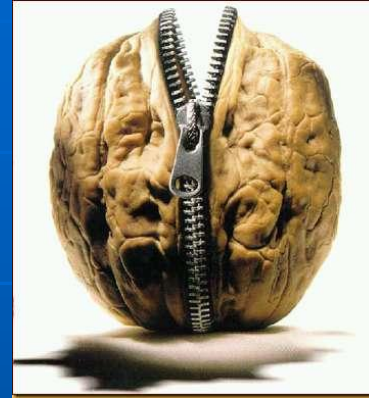


Develop one of the world's most comprehensive and extensive databases to facilitate study of the functional relationship between DNA markers and economically important traits. The database will ultimately provide the information necessary to incorporate DNA test results along with phenotypes into ASA's National Cattle Evaluation, thus providing Simmental breeders with more accurate EPDs than ever before.

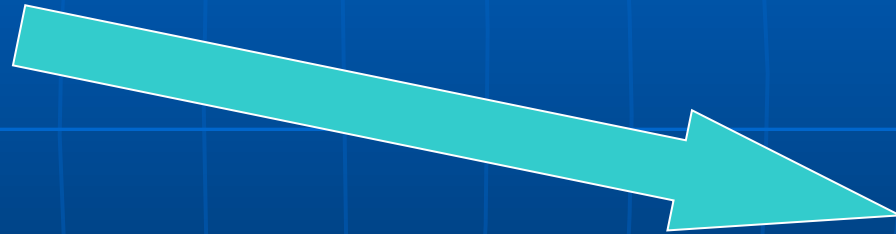
# ASA's Goal ...



# In a Nutshell



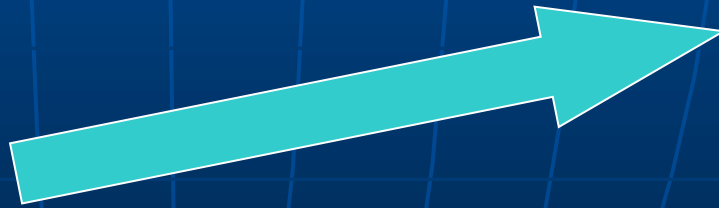
**DNA**



**National Cattle Evaluation**

**EPD**

**Acc**



**Phenotypes**



AMERICAN  
**Simmental**  
ASSOCIATION

**406-587-4531**

e-mail: [simmental@simmgene.com](mailto:simmental@simmgene.com)  
website: [www.simmental.org](http://www.simmental.org)



The ASA Board of Trustees has allocated a large sum of ASA money toward this goal



IOWA STATE  
UNIVERSITY



AMERICAN  
**Simmental**  
ASSOCIATION

**406-587-4531**

e-mail: [simmental@simmgene.com](mailto:simmental@simmgene.com)

website: [www.simmental.org](http://www.simmental.org)



ASA has aligned themselves with several organizations for financial and scientific collaboration



IOWA STATE  
UNIVERSITY



AMERICAN  
**Simmental**  
ASSOCIATION

**406-587-4531**

e-mail: [simmental@simmgene.com](mailto:simmental@simmgene.com)  
website: [www.simmental.org](http://www.simmental.org)



ASA has amassed a large (app. 2500 hd) database of 50K - 700K genotypes to develop a Simmental-specific DNA panel



IOWA STATE  
UNIVERSITY



AMERICAN  
**Simmental**  
ASSOCIATION

**406-587-4531**

e-mail: [simmental@simmgene.com](mailto:simmental@simmgene.com)  
website: [www.simmental.org](http://www.simmental.org)



The genotypes are being analyzed by the  
National Beef Cattle Evaluation Consortium  
to develop molecular breeding values



IOWA STATE  
UNIVERSITY



AMERICAN  
**Simmental**  
ASSOCIATION

**406-587-4531**

e-mail: [simmental@simmgene.com](mailto:simmental@simmgene.com)

website: [www.simmental.org](http://www.simmental.org)



ASA has already modified its genetic evaluation software to accommodate the inclusion of data from DNA tests





IOWA STATE  
UNIVERSITY



AMERICAN  
**Simmental**  
ASSOCIATION

**406-587-4531**

e-mail: [simmental@simmgene.com](mailto:simmental@simmgene.com)

website: [www.simmental.org](http://www.simmental.org)



By November, ASA plans to incorporate DNA test results into our genetic evaluation... which achieves our goal!

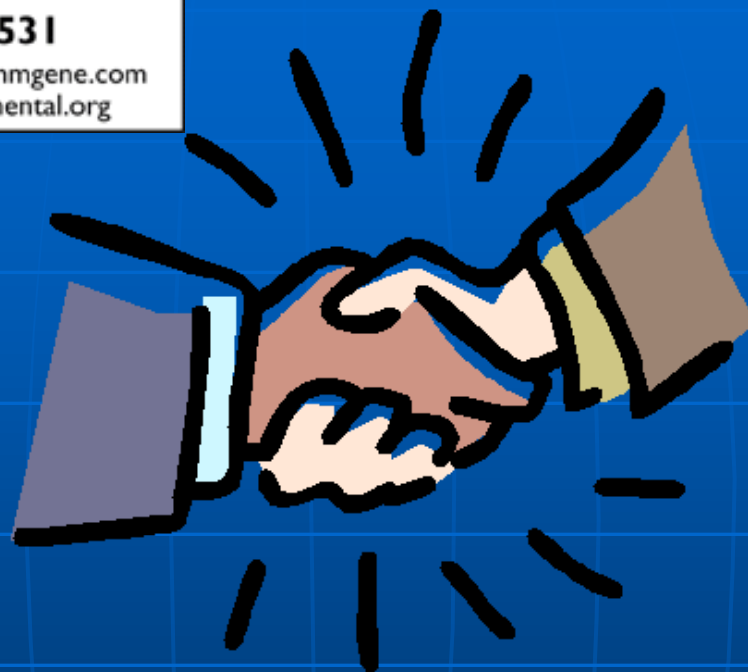


AMERICAN  
**Simmental**  
ASSOCIATION

**406-587-4531**

e-mail: [simmental@simmgene.com](mailto:simmental@simmgene.com)

website: [www.simmental.org](http://www.simmental.org)



ASA would like to thank the WSFF for their contribution towards the advancement of genomic technology and ultimately the advancement of the Simmental population