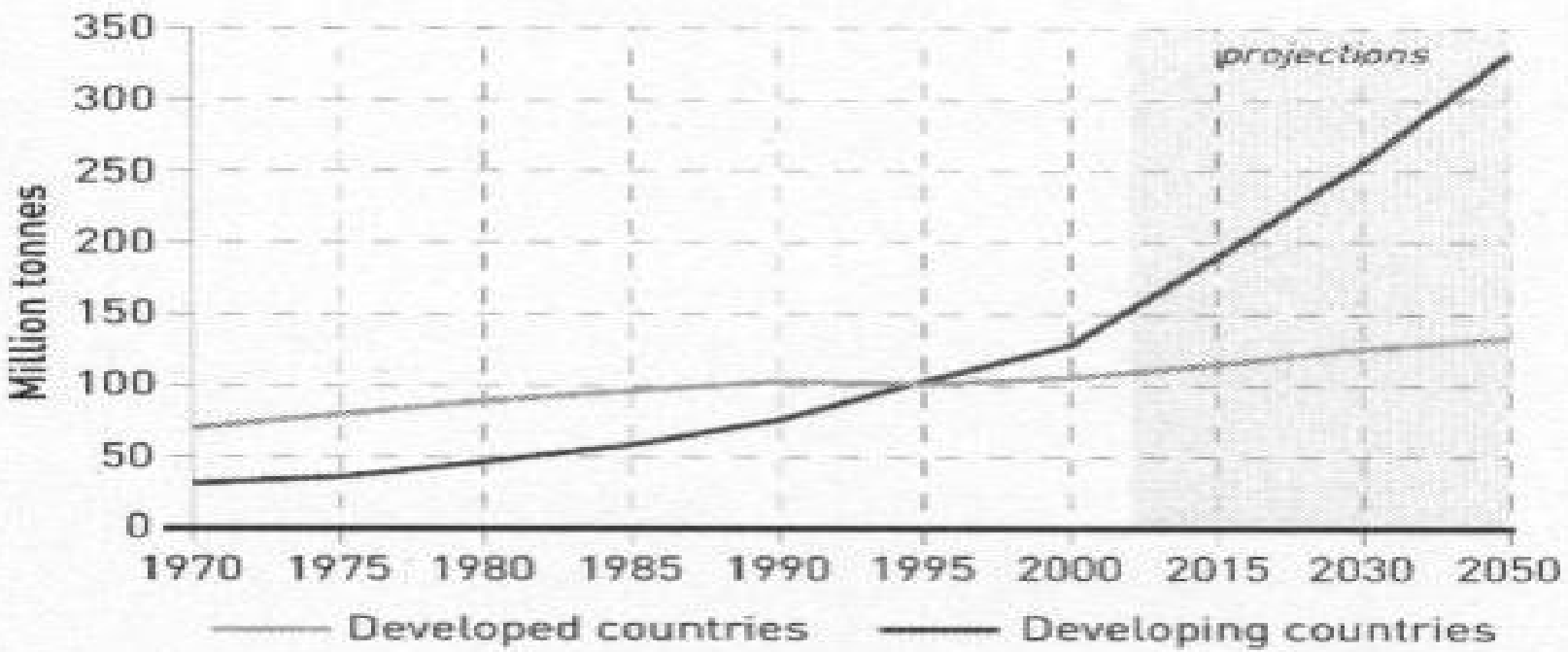


Simmental cattle – the base for the succesfull production of the beef meat in the SE Europe

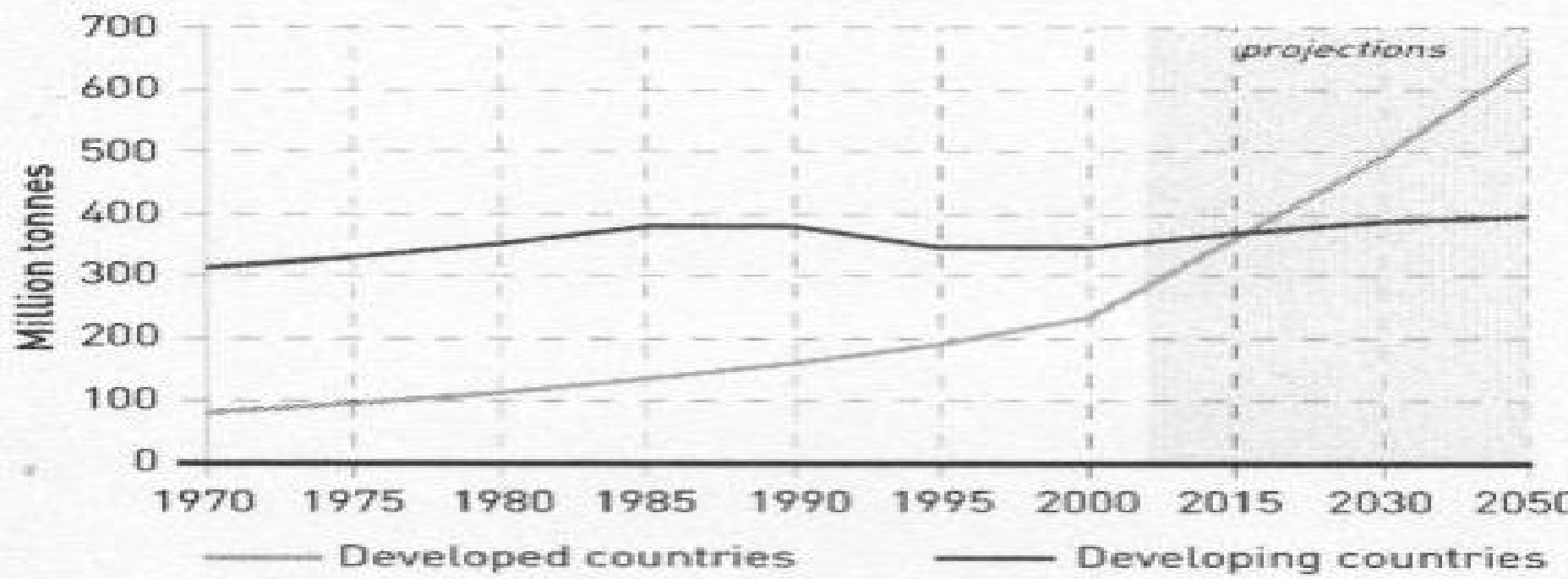


Figure 1.6 Past and projected meat production in developed and developing countries from 1970 to 2050



Source: FAO (2006a) and FAO (2006b).

Figure 1.7 Past and projected milk production in developed and developing countries from 1970 to 2050



Source: FAO (2006a) and FAO (2006b).

The number of bovine animals for the period from 1980. – 2004.

Area	Year			2004.:1980. +,- %	2004.:1990. +,-, %
	1980.	1990.	2004.		
World	1.216.420	1.296.120	1.34.501	9,71	2,96
Africa	171.765	187.829	231.762	34,93	23,39
Asia	347.072	401.813	443.129	27,68	10,28
Europa: West	100.382	94.569	80.621	- 19,69	- 14,75
East	33.602	29.979	16.040	- 52,26	- 46,50
South America	242.042	272.173	326.665	34,96	20,02
N. and cent. America	171.502	159.482	161.158	- 6,03	1,05
Oceania	34.955	31.882	36.887	5,53	15,70

Beef meat production from 1980. – 2004.

Area	Year			2004.:1980. +,- %	2004.:1990. +,- %
	1980.	1990.	2004.		
World	45.556.425	53.432.841	58.702.028	28,86	9,86
Africa	3.025.281	3.355.632	4.137.992	36,78	23,31
Asia			12.279.889		
Europa: West	8.756.483	9.200.313	7.642.502	- 12,72	- 16,93
East	2.001.938	2.053.171	1.079.200	- 46,09	- 47,44
South America	7.507.599	9.368.722	12.981.068	72,91	38,56
N. and Central America	12.297.443	13.119.267	14.679.512	19,37	11,89
Oceania	2.077.238	2.176.058	2.754.565	32,61	26,59



Karakteristika

- South-east Europe
 - Great number of holdings
 - Small number of bovine animals per holding
< 10

The number of cows and percentage of simmentals in the countries of SE Europe, EU non members

Country	The number of cows	Percentage of simmental	
		(%)	No. of cows
Albania	296.000	1,00	2.960
Bosnia and Hercegovina	291.429	65,00	189.429
Montenegro	122.000	6,80	8.296
Croatia	241.084	72,28	174.256
Macedonia FYR	90.138	12,70	11.448
Serbia	650.000	56,00	364.000
TOTAL:	1.690.651		750.388

Source FAO Statistical Yearbook 2005- 2006

The number of cows per ha

Area	ha	The number of bovine animals	animals per ha
EU <u>27</u>	187.027.000	90.300.430	0,48
Non EU <u>6</u>	12.529.000	3.147.000	0,25

PERCENTAGE:

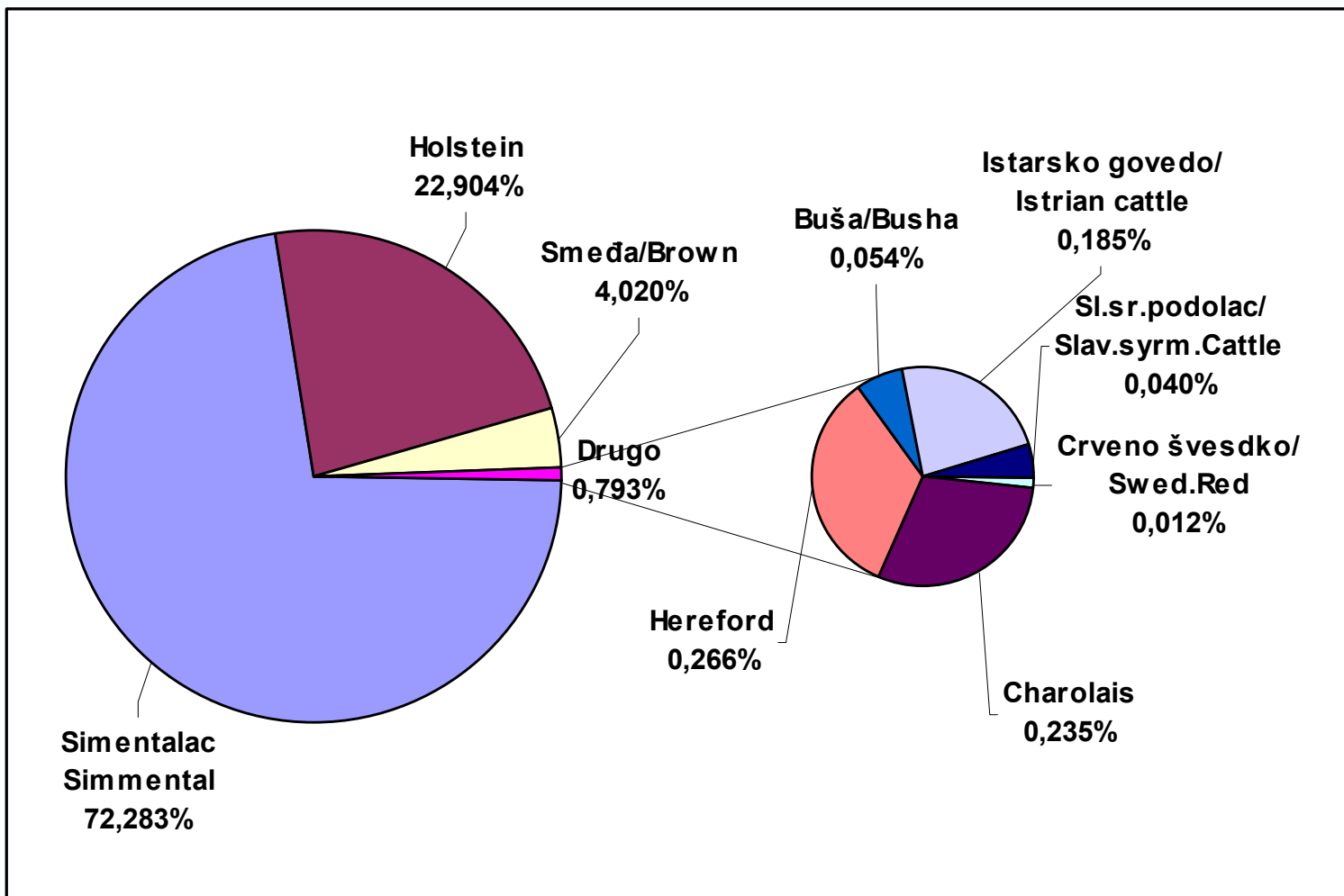
6,7 %

3,49 %

The number of cows in the Republic of Croatia

<i>Godina</i>	<i>Ukupan broj krava</i>	<i>Krave obuhvaćene uzgojno – selekcijskim radom</i>				** Krave dojlje
		<i>Obiteljska gospodarstva</i>	<i>Farme</i>	<i>Ukupno</i>	<i>Ukupno u %</i>	
Year	Total number of cows	Number of cows under recording				** Suckling cows
		Family farms	Enterprises	Total	Total in %	
1995.	235.400	42.689	4.455	47.144	20,03	-
2006.	*241.084	174.615	10.512	185.127	76,79	55.957

Breed structure

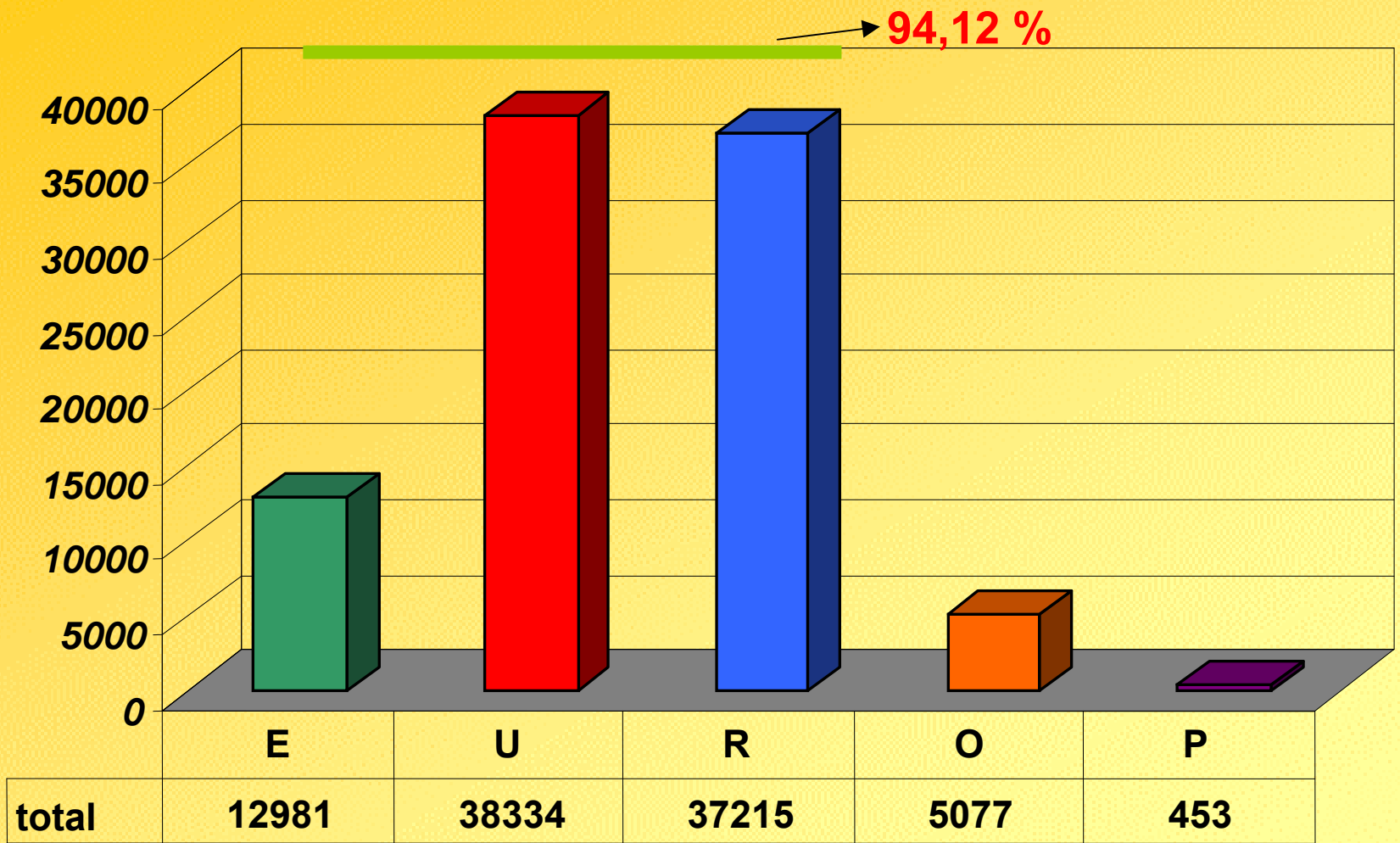




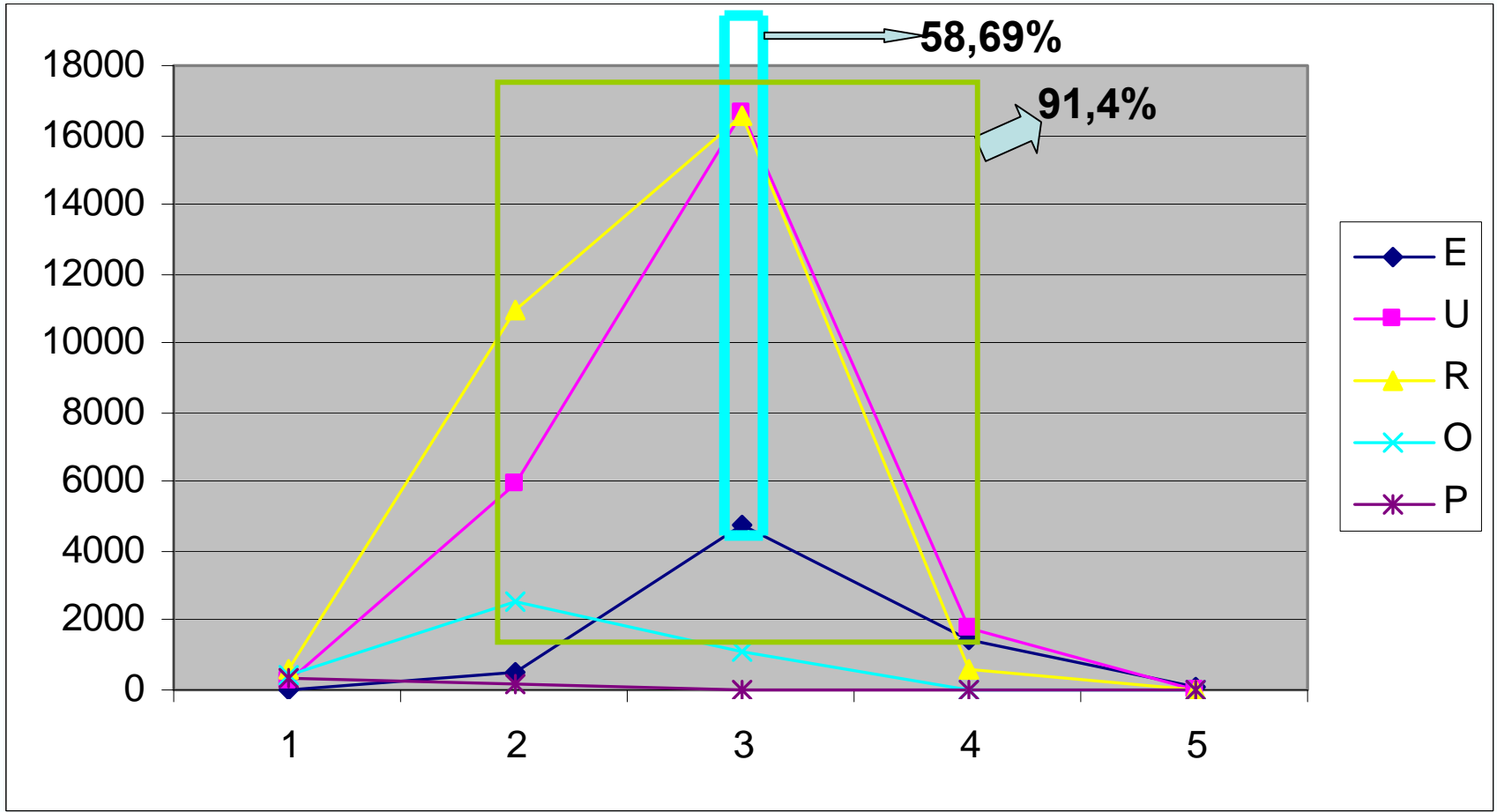
The results of progeny test for young bulls

Year	Daily gain (gr)	Carcase percentage (%)	Meat percentage (%)
1999	1.334	58,65	63,10
2001	1.381	58,49	62,37
2003	1.312	57,55	61,19
2004	1.399	58,25	62,68
Total/ average	1.357	58,23	62,37

THE CLASSES OF YOUNG BULLS IN 2006.

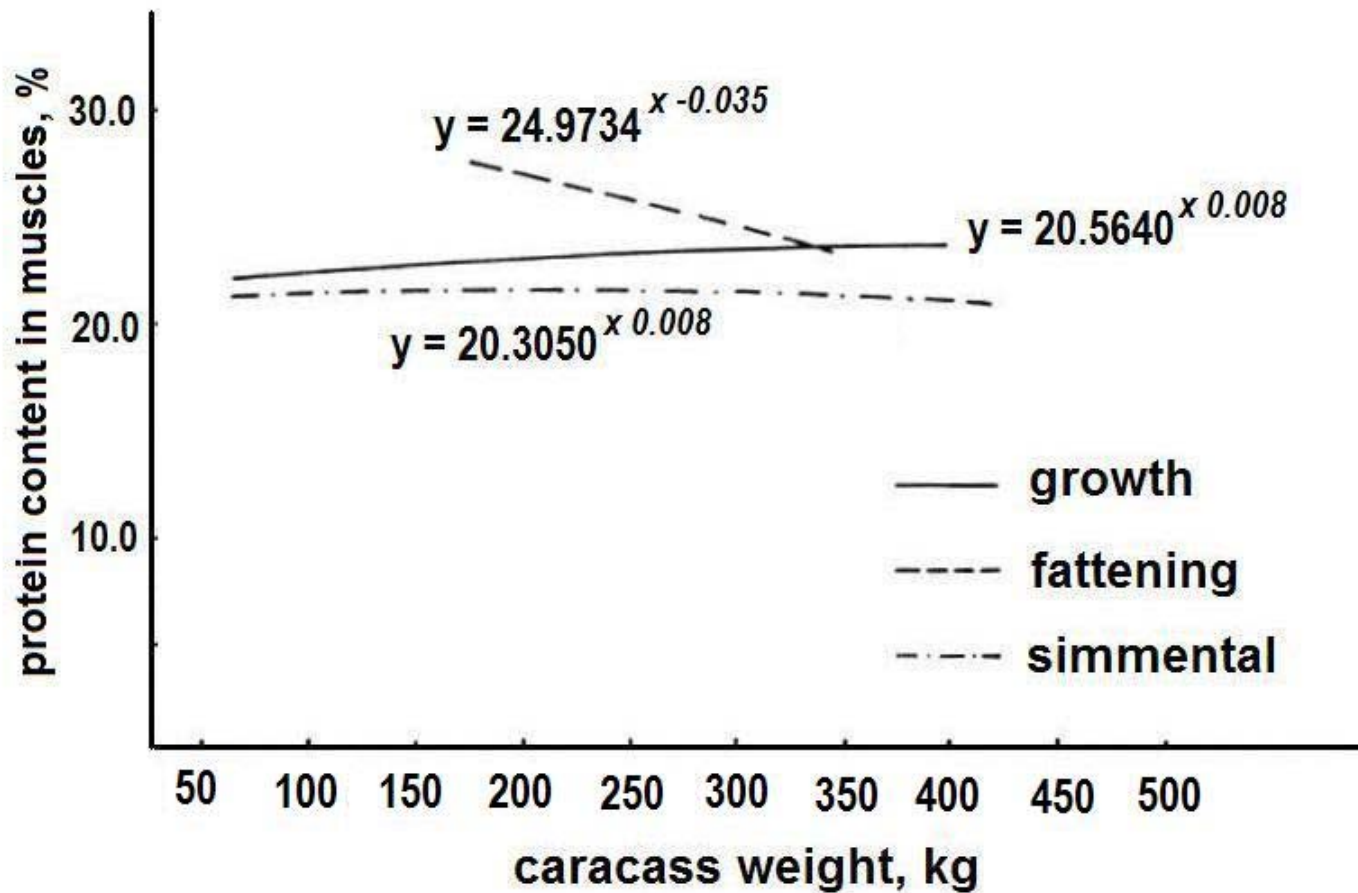


The percentage and the graduance of the carcasses coverage with fet tissue

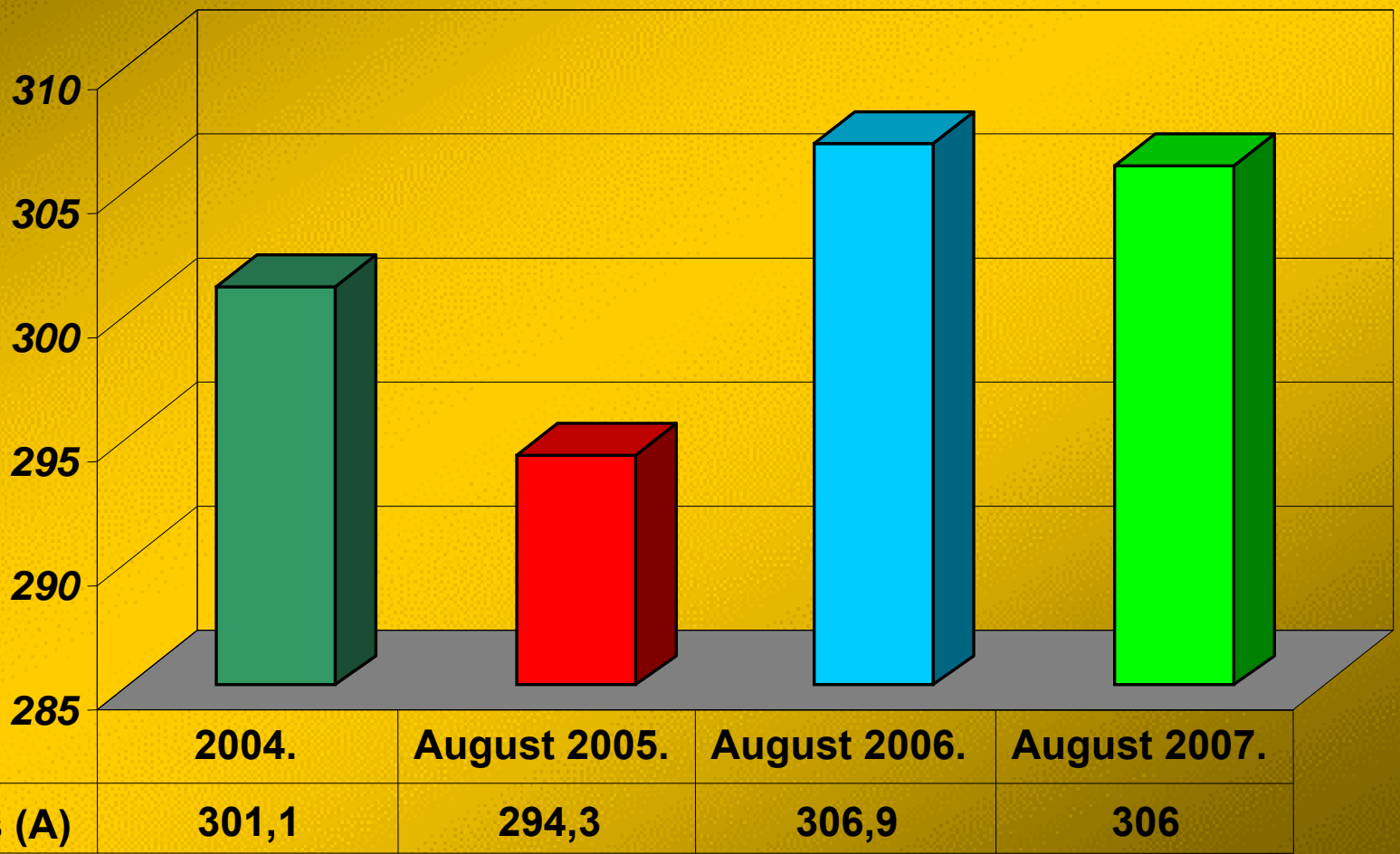




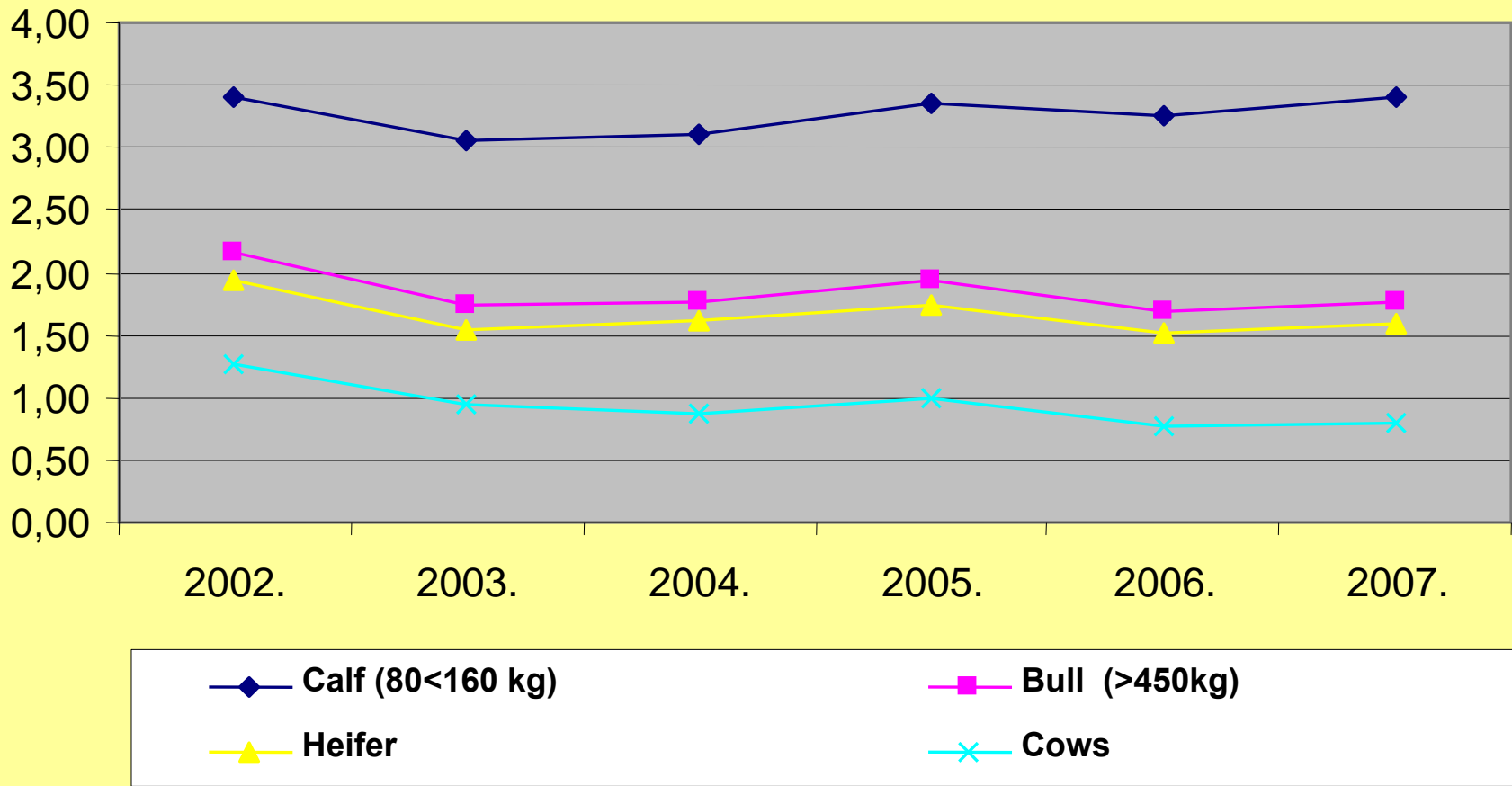
Alometric growth



The average weight of young bulls



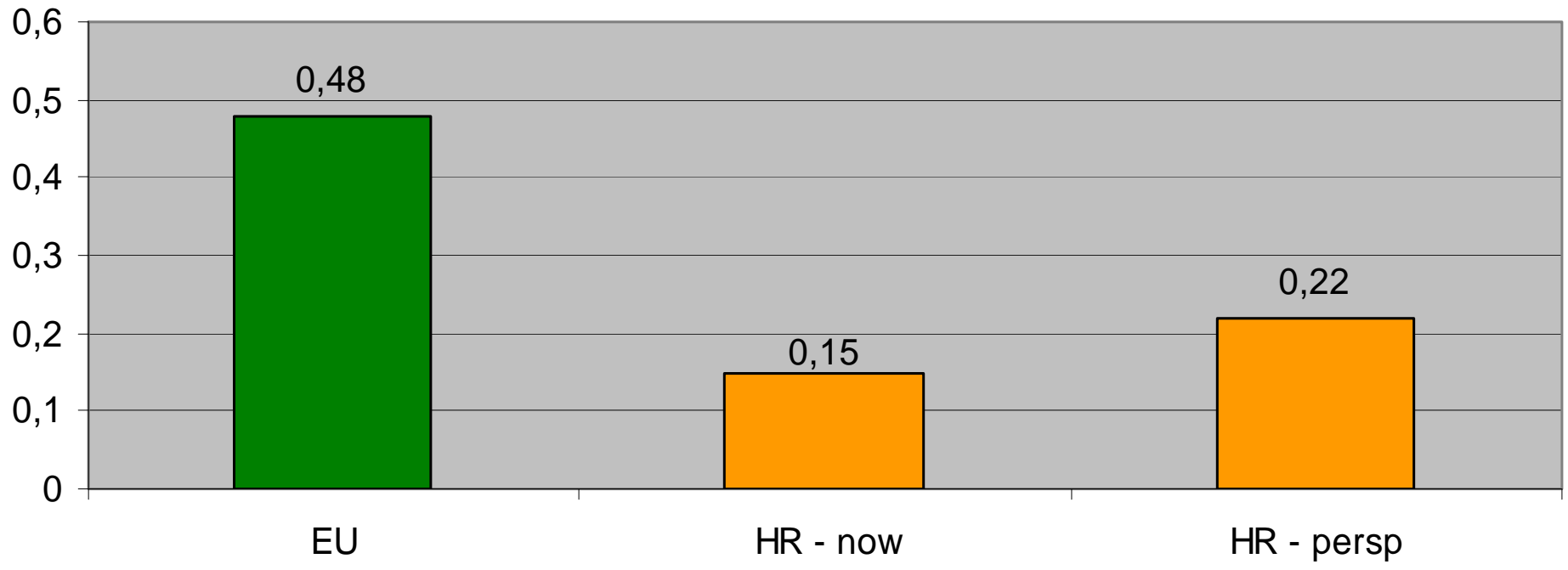
PRICES OF SIMMENTAL BOVINE ANIMALS IN THE 36. WEEK OF THE YEAR (in Euros)



Possible perspectives in the cattle development in Croatia

- Market conditions — Increase of livestock products prices (at the moment)
- Increase of cows number
 - 241.000 => 349.000
- Decrease of holdings number
 - cca 50.000 => 20.00
 - 4,82 => 17,45 cows/holding
- Faster genetic improvement

The number of bovine animals per ha



Production systems

- Intensive fattening on specialized farms
- Intensive and semi-intensive fattening on farm with mixed production
- Cow-calf system
- Suckling cows
- Calf fattening – dairy breeds

Possible beef production in Croatia

Category	No of animals	Carcase weight	Kg
Calfs	27.000	68,20	1.841.400
Young bulls	9.000	182,90	1.646.100
Bulls	203.800	360,00	73.368.000
Culled cows	74.300	294,50	21.881.350
TOTAL:	314.100		98.736.850

Production increase per capita from cca 13 kg up to cca 23,5 kg

Breeding strategy

- *Breeding goals support the development of the Simmental as dual purpose breed*
milk + meat
- **In the part of population the meat production is pointed out**
 - **cow-calf system – *meat (pulled) type***
- *Integration in the European breeding programs*

Conclusions

- Increase of global production and meat consumption (prices)
- **The possibility for production increase of beef in SE Europe**
 - **SIMMENTAL-**
- Traditional breed with great percentage in total population
- **Appropriate for small and middle holdings**
- Large potential for meat production
- Efficiency in different production systems
- **Concurrency in actual market conditions**
- Breeding strategy – maintain fattening traits



Thank you for your attention